

# Nekoté

LIMITED PARTNERSHIP

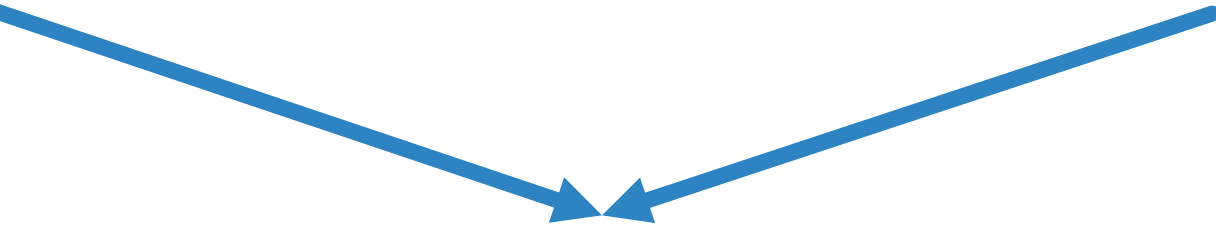
Nekoté LP is a partnership representing 7 First Nations:

- Chemawawin Cree Nation
- Mathias Colomb Cree Nation
- Misipawistik Cree Nation
- Mosakahiken Cree Nation
- Opaskwayak Cree Nation
- Sapotaweyak Cree Nation
- Wuskwi Sipiik First Nation



CANADIAN  
*Kraft Paper*

**Nekoté**  
LIMITED PARTNERSHIP



TOGETHER CREATED A PARTNERSHIP



**Nisokapawino Forestry  
Management  
Corporation**





CANADIAN  
*Kraft Paper*

Nisokapawino Forestry



Management  
Corporation

**Nekoté**  
LIMITED PARTNERSHIP

- Operates pulp and paper mill
- Uses fibre from Forest Management Licence (FML2)
- FML Annual Allowable Cut (AAC) is 1.6 million cubic meters (m<sup>3</sup>)
- Mill consumption is 800,000 m<sup>3</sup>, increasing with continued investments
- Approximately 350,000 m<sup>3</sup> supplied as residual wood chips from sawmills or other sources in MB and SK
- Share responsibilities of the Forest Management Licence Agreement (FMLA) with NFMC
- Commitment to Partnership Objectives supported by funding and new process

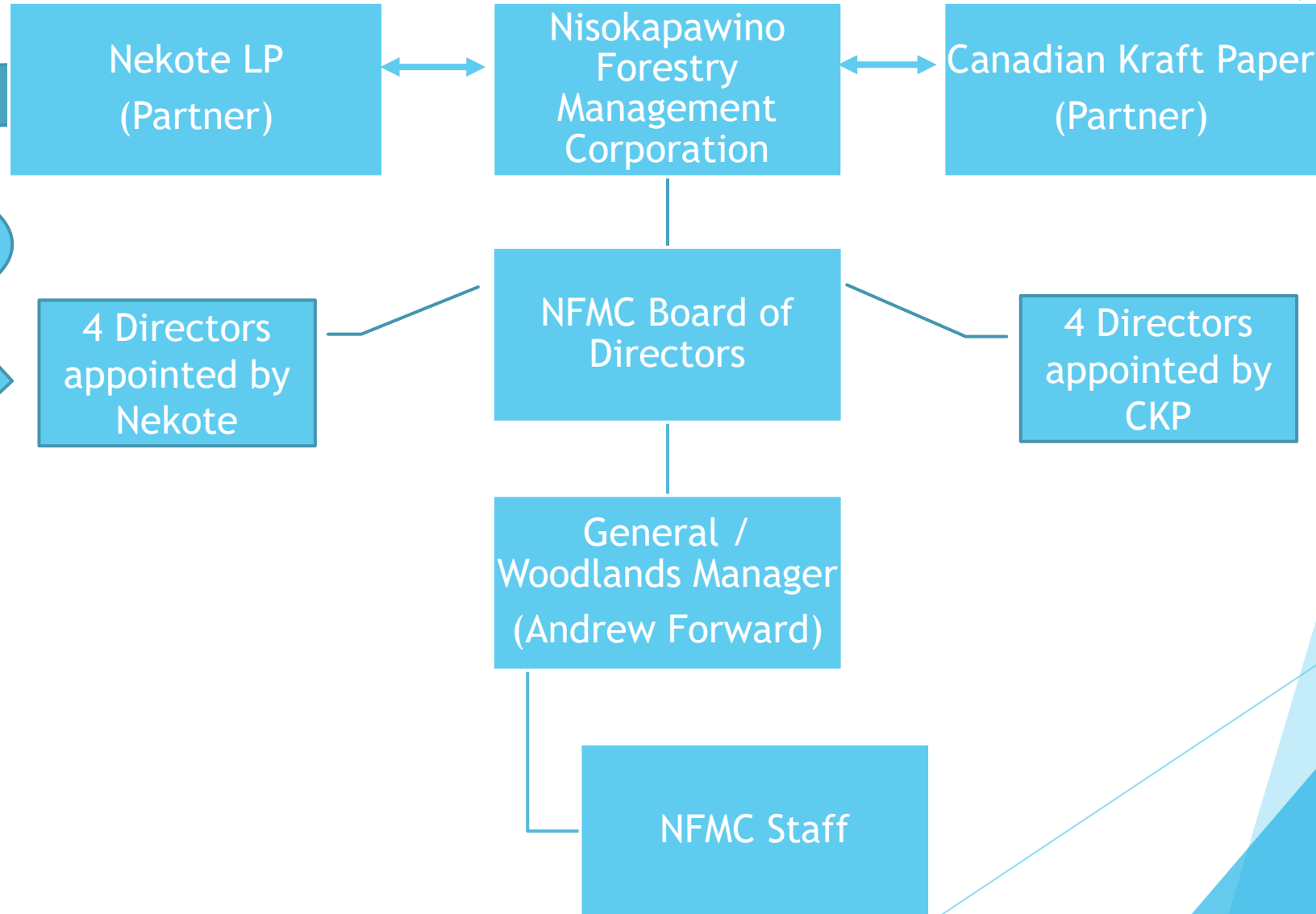
- CKPI and Nekote partnered to operate FML jointly
- Significant control over forest management for Partners
- Creates long and short term forest management plans
- Responsible for renewal activities on the FML
- Board of Directors are 50% appointed by Nekote, 50% appointed by CKP
- Nekote Community expectations have direct influence through the Board of Directors
- NFMC decisions and performance are tooted in achieving the objectives of the Partners through the Board of Directors

- Works for communities
- Help determine what communities want from NFMC through Nekote Liaison
- Nekote identified 6 pillars for the Partnership to fulfill:
  1. *Best Practice forest management*
  2. *Environmental protection*
  3. *Strengthen employment and training opportunities*
  4. *Create opportunities for wealth generation and business*
  5. *Invest in social and cultural programs*
  6. *Encourage education through awards and scholarships*

# Nisokapawino Forestry Management Corporation



# Nisokapawino Forestry Management Corporation



Objectives and Guidance from Partner through the Directors to NFMC

# NFMC is different

- ▶ Partners recognize they have complementary and shared objectives
  - ▶ Environmental Protection
  - ▶ Control over Resource Decision Making
  - ▶ Employment training and opportunities
  - ▶ Opportunities for wealth creation
  - ▶ Investment in social and cultural programs
  - ▶ Educational awards and scholarships
- ▶ Shared Outcomes
  - ▶ Present and stable paper mill
  - ▶ Improved communications with communities
  - ▶ Better relationships

# What NFMC will do

Discuss, Maybe expand or review order of list

- ▶ Activities that revolve around harvest planning, forest renewal, and environmental management.
- ▶ Third Party Certifications (CSA, ISO) will be jointly held by CKP and NFMC.
- ▶ Nekoté communities will have access to a Liaison that is a Nekoté employee that is Aboriginal and Cree speaking to ensure strong communication with NFMC.
- ▶ NFMC will work with Nekoté to identify opportunities for employment and contracting for Nekoté members and Nekoté business.
- ▶ Use processes for communication about Forestry operations that are developed to support environmental protection.
- ▶ An annual report detailing progress in those areas will be provided to the Board of Directors and Nekoté.

# How this happens

- ▶ Certain responsibilities of the Forest Management License have been assigned to NFMC through a tri-party agreement (MB, CKP, NFMC)
- ▶ NFMC staff will conduct the work associated with those responsibilities
- ▶ Nekoté LP has a Liaison position and is establishing Community Contact people to strengthen the relationship between Nekote Communities and NFMC. Each Nekote Community Contact will have ability to ensure the Communities concerns are communicated through the Liaison to NFMC. This is supported as well by a Environmental Management Committee (EMC) of the Board of Directors to oversee that this process of communication and relationship is strong.
- ▶ A process is developed to ensure robust engagement by communities in the planning of harvest and renewal activities. The environmental protection document outlines specific lines of communication and responsibilities of NFMC, the Nekote Liaison, Community Contacts, and the EMC.
- ▶ NFMC will be operated through a Board of Directors with representatives from both partners. Nekote appoints for Directors to ensure the objectives of NFMC are met, and that NFMC's objectives reflect the objectives of the two Partners (Nekote and CKP)